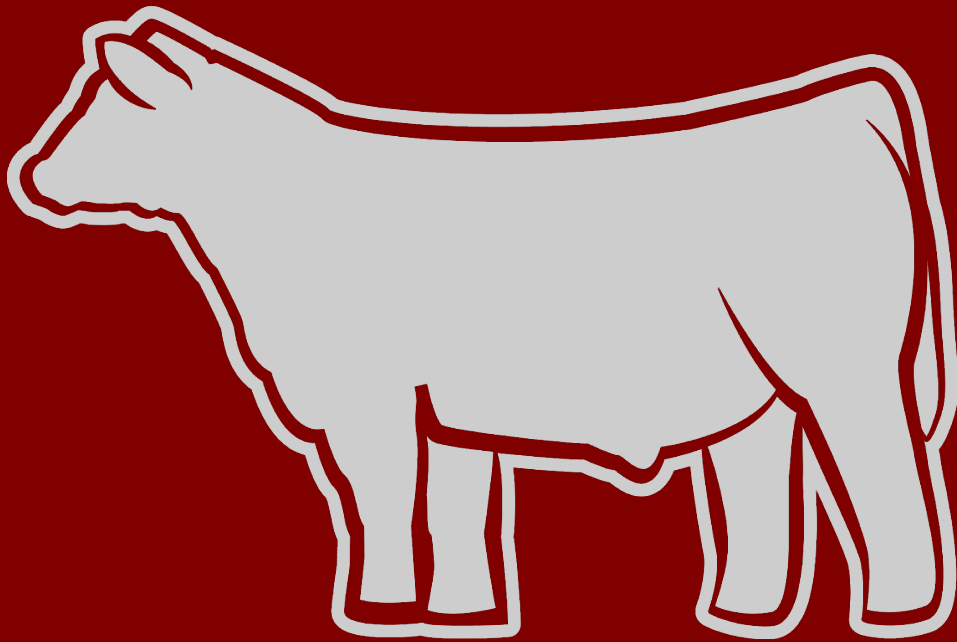


2026



Logan County Cattlemen's Association

4-H/FFA Youth Market Steer Show, Sale & Carcass Contest

- *Responsibility*
- *Commitment*
- *Animal Science Education*
- *Record Keeping*
- *Marketing*
- *Leadership Development*

LOGAN
COUNTY
CATTLEMEN'S
ASSOCIATION

"We Have a Steak in Your Future"

2026 Logan County Cattlemen's Youth Market Steer Show, Sale, & Carcass Contest

This program is sponsored by the Logan County Cattlemen's Association, University of Kentucky Cooperative Extension Service and Division of Vocational Agriculture Education of the State Department of Education.

The purpose of this program is to offer learning experiences for youth in the following areas: responsibility and commitment, animal science knowledge, record keeping, marketing, and leadership. The sponsors hope that the youth involved will be learning about the beef industry as they enjoy raising and showing their steers.

Logan County Cattlemen Board

Andrew Milam, *Steer Show Chairman*

Jared Holloway

John Walpole

Kenton Howard

Wayne Johnson

Jason Brown

Conner Williams

Chris Milam

Lonny Epley

Adam Scruggs



"We Have a Steak in Your Future"

Leann Martin, *Logan County Extension Agent for Agriculture & Natural Resources*

Maci Venable, *Logan County Extension Agent for 4-H Youth Development*

Jay Campbell, *Logan County FFA Advisor*

Wesley Estes, *Logan County FFA Advisor*

Chris Milam, *4-H Livestock Certified Leader*

Paul & Ellie Gripshover, *4-H Livestock Certified Leader*

If you have any questions or concerns about the program or obtaining educational hours, please call the Logan County Extension Office at 270-726-6323.

2026 Logan County Cattlemen's Youth Market Steer Show, Sale, & Carcass Contest

Important Dates

December 6, 2025 **8 am - 10 am**

Initial Weigh-in - *Russellville Livestock Market*

134 Farmers Dr, Russellville, KY 42276

January __, 2026 (TBA) **6 pm**

Parent & Exhibitor Meeting **Required for ALL Exhibitors**

Logan County Extension Office

We will discussed the NEW rules and expectations and answer any questions

April 14, 2026 **4 pm - 7 pm**

Preliminary Weigh-in - *Logan Co. Ag Arena*

*****Mandatory for all animals*****

May 26, 2026 ***Show Day***

11:00 am Animals On-Grounds & Weighed In

1:00 pm Show

5:30 pm Dinner

6:30 pm Sale

Logan County Extension Arena

2026 Youth Market Steer Show, Sale, & Carcass Contest

General Policies, Procedures & Expectations

The Logan County 4-H/FFA Youth Market Steer Show is a terminal livestock show & consists of six interdependent parts. The exhibitors & steers/heifer must participate in the total program.

Program Details

1. All young people who have a Logan County address or attend a Logan County School who meet 4-H, FFA, or Junior Cattlemen requirements are eligible to participate
 - 4-H:** Beef Project Club/Livestock Club Member, 9-19 years old as of January 1, 2026
 - FFA:** Logan County FFA Chapter member in high school Beef Project, 9th grade through up to 3 years after graduation.
 - Jr. Cattlemen:** 9-19 years old as of January 1, 2026; Must attend Training Course

4-H & Jr. Cattlemen members are required to complete 6 hours of educational training to participate

Education Hours must be completed by April 14, 2026*

All training is to be in-person or live (adopted 2024)

Date may differ for those interested in going to State Fair or any other state sponsored show
2. A steer must be registered at the December weigh-in in order to participate in the show. In order to participate in the Steer Sale & Carcass Contest, a steer must have been shown in the Steer Show
3. Market heifers are not eligible to be exhibited (*Adopted 2021*)
4. **Exhibitors are allowed to weigh-in up to three steers but can only show two.** Siblings may co-tag calves. Any calf that is going to be co-tagged must be identified at the initial weigh in. The decision on which ones to show must be made prior to weigh-in on show day.
5. An exhibitor may choose to keep their animal after the show **with the intensions** of taking the same animal to other county fairs, Kentucky Department of Agriculture shows, and this year's Kentucky State Fair. After the Kentucky State Fair, they must be harvested.
 - If an exhibitor elects to keep their animal through to the state fair, they must meet with Leann Martin to make sure all pre-requisites are completed to qualify for the State Fair. (The pre-requisites have deadlines prior to the local show & sale)
 - If an exhibitor elects to keep their animal, that animal will sell for premium only (the difference of the floor price from the bid price) and it will be the responsibility of the exhibitor to find a carcass buyer.
 - If an exhibitor elects to keep their animal, they will be disqualified to compete in the carcass contest.
 - If an exhibitor elects to keep their animal, proof of harvest of that animal is required.
 - The exhibitor will have to make the decision on whether to keep their animal or not between the Show and Sale on show day.
6. The steer(s) are required to be located at the exhibitors' address, on a farm owned by the immediate family member of the exhibitor, and/or at a farm in Logan County.
7. **Animal health is a top priority.** Steers with any transmittal health issue may be required to proceed with additional regulations to ensure the health of all other steers or may be disqualified depending on the severity of the issue at any stage of the program. Any steer deemed unsafe for human consumption will be disqualified. All steers are required to adhere to all medication harvest window restrictions. External fungal or viral diseases (ex: warts, ringworms, etc.) are to be treated immediately.

Step 1: Initial Weigh-In

Dec. 6, 2025

1. Exhibitors are allowed to weigh-in up to three steers but can only show two. Siblings may co-tag calves. Any calf that is going to be co-tagged must be identified at the initial weigh in.
2. Steers will be tagged, de-wormed & given a complete vaccination program at registration/weigh-in day. Exhibitors may elect to not vaccinate if the animal has had up to date vaccinations.

3. **Show tags are to remain in the steers' ear throughout the entire program.** If a tag is lost or needs to be replaced, contact Leann Martin or Andrew Milam immediately. Pictures and documented proof of lost is required.
4. **Logan Proud** is a promotional program that encourages young producers to invest in their fellow local beef producers when purchasing or raising their steers for the show. To qualify to be **Logan Proud**, the steer must be born on a farm with a Logan County address.
*Any steer wanting to be labeled as **Logan Proud** must have the Producer Form Signed by the December Weigh in. They will be tagged with a different color sale tag. (Contact Leann Martin for a Logan Proud Producer Form)*
5. No bulls or bullocks will be registered at the December weigh-in. If a bull or bullock is brought to the initial weigh-in, unknown by the owner, it may be weighed in but must go to a local clinic as soon as possible to get it fixed. The exhibitor will be responsible for informing the Cattlemen board of the completion and show proof. If proof cannot be determined, the animal will be disqualified. The Cattlemen Board will be checking on all cases.
6. Steers are encouraged to be dehorned by the December weigh-in but must be completely dehorned & healed by April 14, 2026 at the preliminary weigh in. Scurs are allowed

Step 2: Preliminary Weigh-In

April 14, 2026

The Preliminary Weigh-In is designed to give all exhibitors the chance to weigh their steers to see the progress they are making or need to make in order to surpass the 1,000 pound minimum on Show Day. It also gives the steers a chance to experience a trailer ride and the stresses associated with it prior to show day. Exhibitors are expected to have worked several hours with their steers at this point.

1. Scales will be set up in the arena. Steers will be unloaded from their trailers, sent through a short alley into the scales, and into a small pen on the other side where they will be loaded back onto their trailers.
2. Steers that weighed in (at the December weigh in) with horns (not recommended or endorsed) must be completely healed
3. It is mandatory for all steers to be weighed in at the preliminary weigh in and all exhibitors are expected to be there as well
4. **Steers are to be halter broken by the preliminary weigh in.** Exhibitors are expected to lead their steers from the trailer, through the scales, and back onto their trailers. (Gates will be set up to assist in the pathways but are not to be used as the only means of holding the steers) Steers deemed unsafe could be disqualified from the program in its entirety.

Step 3: Show Day

May 26, 2026

1. The steers must be on the grounds and weighed in no later than **11:00 AM** on Show Day, May 26, 2026. The scales will be set up on the morning of show day. Weights will be recorded starting at 9:30 am. **Steers will be weighed-in one (1) time.** No reweighs are permitted.
2. No steer will be officially weighed in unless there is a minimum of two (2) Cattlemen Board members are present.
3. **Steers must weigh a minimum of 1000 lbs. on show day.** Your steer must weigh within 2% of the minimum weight (1000 lbs = 20 lbs) to be eligible to show or sale. (Any animal below minimum weight may sell for meat if extra steers are needed) **This will be strongly enforced**
4. The Cattlemen Board will divide steers into classes based on weight after weigh-in on show day.
5. There will be a meeting/announcements following the weigh-in for all exhibitors and parents to review weights & to answer any questions.
6. Lunch will be provided to the exhibitors, by the Logan Co. Cattlemen's Association on Show Day. Lunch will also be available to purchase for all spectators on Show Day and all profits go back to the exhibitors and help fund awards.
7. Exhibitors are required show their own steers unless incapacitated or with more than one entry in a weight class. In that case, another steer exhibitor may show the animal. *(If the exhibitor knows in advance that they will be unable to show due to a health or medical reason, please contact Leann Martin as soon as possible)*
8. Exhibitors are expected to dress in nice show attire (example: collared shirts, nice & clean jeans, boots) for **BOTH** Show and Sale
9. **Steer Show**

- a. Steers will be divided into weight classes based on the weights recorded during the show day weigh in
- b. There will be a maximum of 8 weight classes
- c. Classes will be shown from lightest to heaviest
- d. First place winners from each weight class will come back into the ring, following the last weight class, to compete in the Championship Drive
- e. A **Top 5** will be awarded along with a Champion & Reserve Champion Logan Proud.
 - One of the class winners will be selected as the Grand Champion, at that time, the second place steer from the same weight class will be welcomed to come into the ring to compete for the Reserve Champion, followed by the overall Third, Fourth, and Fifth; each time, the next steer placed the highest in class coming in to compete for the next award.
 - There will be a separate Logan County Proud Champion and Logan County Proud Reserve Champion if the overall Top 5 are not Logan County Proud.
 - All top placed Logan Proud steers from each class will be welcomed to come into the ring to be chosen for the Logan Proud Champion and Logan Proud Reserve Champion

10. Showman Safety Policy

- a. Steers must be halter broken on show day so as to permit the exhibitor to show safely. Any animal considered by the show judge or the Cattlemen Board a hazard to exhibitors, spectators, etc. will be excused from the show & ineligible for class placement & show. In the case that a steer is excused, the exhibitor is not allowed to sale the steer in the live auction but may sell that calf at the floor price if they so choose.
- b. The Logan Co Cattlemen Board will be implementing the “3 Break Away Rule” with a 3 person committee to enforce it. The committee consist of an Extension Agent, FFA Advisor, and an Industry Leader and/or the Steer Show Chairman. (Adopted 2022)
 - **3 Break Away Rule:** If a steer gets away from the exhibitor or the handler while at the show (whether in the ring, tie downs, wash rack, or anywhere within the Arena), the exhibitor/handler will be given two chances to regain control of said steer. After the third instance, the steer will be dismissed. If dismissed, the steer will not be able to return to the show and will not sale at the live auction. If dismissed, the steer will not be legible for class premiums and forfeits all extra monetary awards. It will be given the chance to be purchased for carcass (meat) only.
 - The 3 Break Away Rule goes into effect once the steer crosses the scales on show day.
 - If a steer has caused emanate danger to itself or anyone in the arena, it will be immediately dismissed.

11. Showmanship Contest

- a. Showmanship Contest is where the judge will be evaluating the work and effort of the showman and not that of the quality of animal. Exhibitors are expected to know general information about their steers when asked by the judge.
- b. Showmanship is judged based on how well the exhibitor shows their animal including, but not limited to, correctly placing the steer’s feet, keeping eye contact with the judge, holding the steer’s head up, and maintaining control of the steer.
- c. Exhibitors for the showmanship contest will compete in the following age groups based on the exhibitor’s age as of January 1st of the current year

Juniors (9-12 years old)	Intermediate (13-15)	Senior (16 years & up)
<i>(Age divisions may change on show day depending on number of entries)</i>		

 Showmanship classes will be shown from oldest to youngest and a Supreme Showman will be awarded from the top showman of each age group.

12. Current health papers for each animal will be provided on show day.

13. Exhibitors and those assisting are expected to treat all the animals humanely and without harm

14. Exhibitors will be expected to clean their own stall and to assist in the cleanup of the panels after the show and Sale

15. **Decisions of the judges and Cattlemen Board are final. Any complaints should be addressed to the Cattlemen Board in its entirety.**

16. All animals will be sent to the processor (Hampton’s) after the show. Exhibitors will be expected to help get their animal loaded on the trailers as well as help in stall break down. All extra animals going for

custom kill are also expected to go to the processor the night of the show, unless other arrangements with the processor has been made.

Step 4: Sponsor Dinner & Sale

1. Following the Show and Showmanship Contest, the Logan County Cattlemen will host their Sponsor Dinner and Sale
2. All exhibitors and their families, Logan County Cattlemen members, and our local Sponsors are welcome to attend
3. Steers shown on Show Day will be auctioned in the Sponsor Sale that evening
4. The sale order will be based on the results of the show. (Higher placed steers going first)
5. Exhibitors are expected to dress in a collared shirt or their show attire for the Sale
6. Exhibitors are expected to present their steers in the Sale Ring in a way that best exhibits that animal (showing off their best qualities)
7. Pictures will be taken of all steers after they exit the sale ring with their buyer (some buyers may not want to take the picture with the animal but all animals will have a picture to send to the sponsors)
8. Sponsors/Buyers have 4 options or ways of sponsoring:
 - a. Monetary Sponsorship – Any monetary sponsorship (any amount) will be accepted and greatly appreciated. The funds collected will be combined together, into groups, and used to buy steers at the auction.
 - b. Auction Buyer: Buy & Keep – Purchase the steer by being the highest bidder at the live auction AND “Keep” the steer for meat for themselves or their company. They will be billed for the sponsorship portion of the auctioned price (*Live bid price minus the floor price*) as well as the carcass purchase (*Carcass weight x Carcass Price plus or minus meat quality premium*). Leann Martin will be collecting contact information from all carcass buyers to send to the slaughter facility for communication to complete custom orders.
 - c. Auction Buyer: Sponsor Only – Purchase the steer by being the highest bidder at the live auction but NOT keep the steer for meat. They will only be billed for the sponsorship portion of the auctioned price (*Live bid price minus the floor price*). The Carcass will be sold to a carcass buyer.
 - d. Carcass Buyer – Purchase a carcass from an “Auction Buyer: Sponsor Only” steer. They will be billed for the carcass purchase (*Carcass weight x Carcass Price plus or minus meat quality premium*). A list of carcass buyers starts in January of each year. Please contact Leann Martin or a Cattlemen Board member to be added to the list. A non-refundable \$250 deposit is required to be added to the Carcass List. The deposit will be taken off of the carcass purchase price. Leann Martin will be collecting contact information from all carcass buyers to send to the slaughter facility for communication to complete custom orders.
- ** Anyone purchasing a carcass will be responsible for picking the meat up & all processing fees from the slaughter facility.**
9. Floor Price and Carcass Price will be set on Show Day, based on current beef cattle live market values
10. All spectators are expected to remain on the bleachers or bleacher side of the gates during the sale. Only exhibitors and those directly assisting the exhibitors are to be in the stalling areas and/or around the sale ring during the sale. This helps eliminate unnecessary stress and distractions for both the steer and the exhibitors as well as enhances safety for all. (Adopted 2022)

Step 5: Carcass Contest

1. All animals will be sent to the processor (Hampton's) after the show. All extra animals going for custom kill are also expected to go to the processor the night of the show, unless other arrangements with the processor has been made.

It is your responsibility to know the violative levels of residue(s) in the species you provide to Hampton Premium Meats or you present to Hampton Premium Meats for slaughter. See FDA 21CFR556 Subpart B- Specific Tolerance for Residues of new Animal Drugs.

“If the residue concentration in the target tissue exceeds the FDA’s established tolerance USDA-FSIS and will consider the entire carcass adulterated.” Fed. Reg. Vol. 69, No. 89, May 7, 2004, Page 25539.

The carcass will be condemned and not allowed for human consumption.

2. The animals will be transported to **Hampton's Premium Meats** by transportation arranged by the Cattlemen Board. The Carcass Contest is judged at **Hampton's Premium Meats** by USDA Graders.
3. The Carcass Contest will be based on the hanging carcasses evaluation. *(If you would like to go see the carcasses judged, please contact Leann Martin for the date and time)*
4. All calves will be purchased on yield & grade basis. *(Carcass weight x Carcass Price plus or minus meat quality premium)*
5. If carcasses receive discounts or premiums it will reflect in the exhibitors' payment. For example, if a calf is discounted the exhibitor will take the discount, yet if a CAB premium or quality grade premium is issued, the exhibitor will receive that also. (Example—steers grading select or standard tend to receive a discount; steers grading prime tend to receive a premium). Premiums/discounts are based on current market rates.
6. Carcass Contest results will be compiled and sent to an outside evaluator to calculate the carcass contest placings.
7. The Steer of Merit award is given to the steer that achieved the highest combined ratings from the live show and the carcass contest.
8. Carcass Results and the Steer of Merit Awards are given at the third quarterly Logan Co Cattlemen's meeting held in September or early October.

General Information

1. Scales are available to borrow if you want to weigh your calves at any time. Please contact the Logan Co. Extension Office to schedule the pick-up of the scales. If scales are damaged, the borrower will be liable for damages.
2. Exhibitors and those assisting are expected to treat all the animals humanely and without harm throughout the entire program
3. Exhibitors will be expected to clean their own stall and to assist in the cleanup of the panels after the show & sale
4. All Exhibitors are expected to write a personal Thank You note to their buyers. Thank you cards will be available to fill out after the sale.
5. Animal health is a top priority. For more information, see Program Details.

****New for 2026****

Even though growth in both number of exhibitors and steers is great to see, there has been concerns expressed that the level of sponsorships may not be sufficient to sustain the growth without an increase in sponsorships. As a result, the Logan County Cattlemen are implementing a few new exhibitor expectations for the 2026 Logan County Cattlemen Youth Steer Show, Sale, and Carcass Contest.

1. Every exhibitor will be required to talk to at least **5** sponsors or businesses in hopes of increasing current sponsorships prior to the Preliminary Weigh-In on April 14, 2026.
 - It is encouraged that at least 2 of the sponsors be new sponsors
 - The sponsors can be auction buyers, carcass buyers, or monetary sponsors
 - A list of all current sponsors will be given to exhibitors to reference
 - It is encouraged that families with multiple exhibitors to seek out non-duplicate sponsors
 - Exhibitors will have a form to record signatures from the 5 required sponsors to be completed and turned in at the preliminary weigh-in
 - Monetary sponsors can write their checks to "Logan County Cattlemen Youth Steer Show" or go by the Logan County Extension Office to pay with a credit card
 - All sponsors are invited to the show, dinner, and sale
 - If sponsors need additional information or an invoice given, please tell them to email leann.martin@uky.edu or call Leann at 270-726-6323 or 270-776-0019.

2. Exhibitors are expected to get 1 carcass buyer committed (that sponsor(s) will count toward your 5). The carcass buyer can purchase a half or a whole. The carcass buyer does not have to commit to your steer – they will be put on the master carcass list and be assigned following the sale.
With prices high, it has been very difficult to get committed carcass buyers. If we continue to grow in steer numbers and do not have the additional support in finding buyers, the next option will require everyone to find their own carcass buyers or take your meat home (we do not want to do that). In the event we do not have enough carcass buyers this year, we will assign carcasses based on the weight of the steer with the heavier steers being assigned first.
3. Exhibitors and parents/guardians are expected to attend the **Parent & Exhibitor Meeting in January 2026 (date will be announced at the weigh in)** at the Logan County Extension Office. This meeting is for ALL exhibitors and parents/guardians. We will further explain all the new rules and expectations and answer any questions.

****New for 2026****

We have been given a great opportunity to partner with the Beef Specialists at the University of Kentucky and take part in their new implant promotion study. As part of the program, all the steers in our show are eligible to participate at NO COST. It is optional, but could have some positive results.

1. Each exhibitor will have the option to implant their steer(s) or not.
2. Participating in the implant study is voluntary, but encouraged for lighter weighing steers.
3. Implants are used in the beef industry as growth-promoters and can improve feed efficiencies.
4. The implant that will be used is – Synovex Choice

“Utilization of growth-promoting implants in the beef cattle industry provides an opportunity for improving production efficiency. These products have been extensively studied for safety and efficacy. Growth-promoting implants contain active ingredients that are classified as anabolic or tissue building. Within the animal, they promote protein synthesis, resulting in a 10 to 30% increase in growth along with a 5 to 10% improvement in feed efficiency. These products mimic naturally occurring compounds produced by the animal.” – *Grow-Promoting Implants for Beef Cattle, University of Kentucky, ASC-25*